

# **Annual Traffic Census Report 2021**

## **Amendment Revision No. 1**

Typographical and printing errors as shown in the following pages are rectified.  
Relevant amended pages are attached.

Pages A1-88, A1-89.

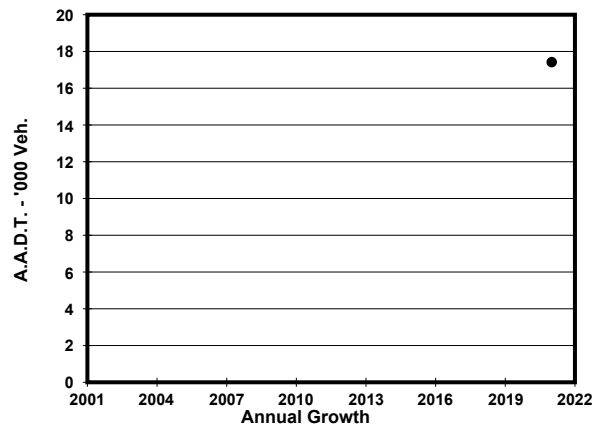
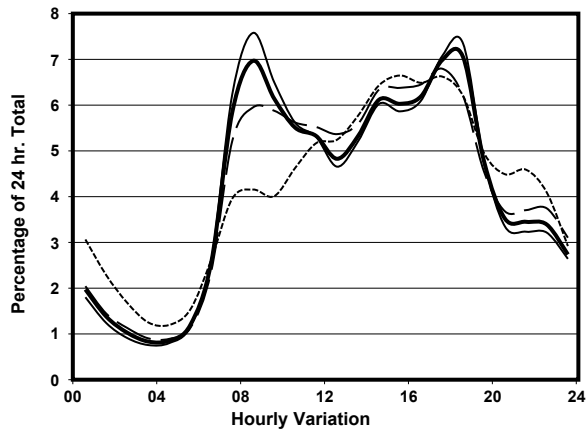
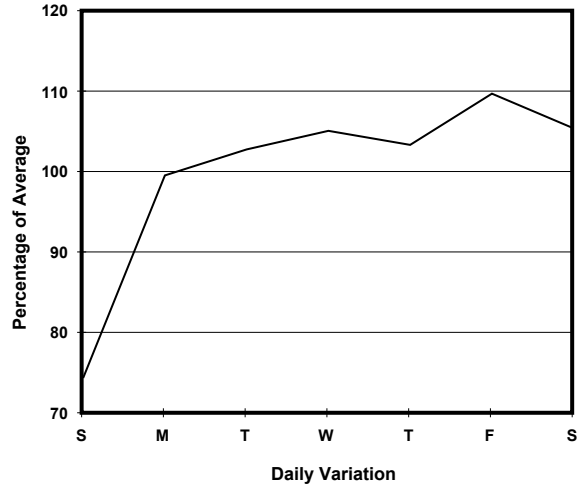
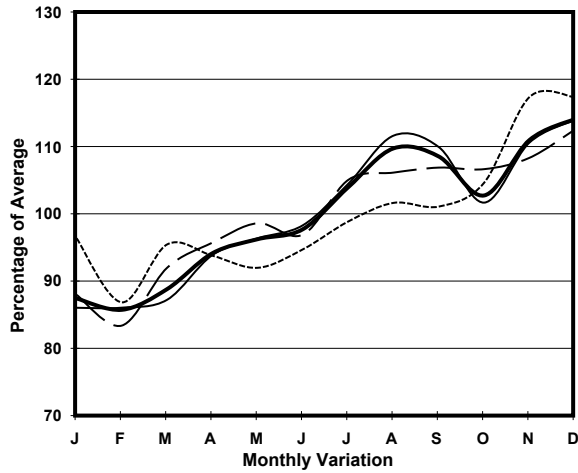
Pages A4-10, A4-11, A4-26, A4-27, A4-28, A4-29.

YEAR 2021  
 CORE STATION 5042  
 ROAD NETWORK MAJOR  
 ROAD TYPE URBAN TRUNK ROAD

LINK TUEN MUN CHEK LAP KOK TUNNEL (from LUNG FU RD to HONG KONG BOUNDARY CROSSING FACILITIES (BCF))



1. TRAFFIC FLOW VARIATION AND GROWTH



— All day    — Mon. - Fri.    ..... Sat.    - - - - Sun.

2. TRAFFIC CHARACTERISTICS (BY DIRECTION)

Parameter	All - Day	Mon. - Fri.	Sat.	Sun.
<b>SOUTH BOUND</b>				
A.A.D.T.	8720	9260	9230	6410
R 12 / 24 - %	74.9	76	73.8	69.1
R 16 / 24 - %	87.7	88.2	87.6	84
AM Peak Hour	0800-0900	0800-0900	0700-0800	0700-0800
One-way flow at AM peak hour	800	950	690	330
T - % (AM)	-	59.2	-	-
PM Peak Hour	1700-1800	1700-1800	1700-1800	1600-1700
One-way flow at PM peak hour	480	500	510	370
T - % (PM)	-	72.4	-	-
Prop.of commercial vehicles - 16 hr.	-	69.4	-	-
<b>NORTH BOUND</b>				
A.A.D.T.	8700	9160	9400	6610
R 12 / 24 - %	69.7	71	68.9	61.7
R 16 / 24 - %	87.2	88	86.5	83
AM Peak Hour	0800-0900	0800-0900	0800-0900	0800-0900
One-way flow at AM peak hour	410	440	450	250
T - % (AM)	-	76.8	-	-
PM Peak Hour	1800-1900	1800-1900	1700-1800	1700-1800
One-way flow at PM peak hour	780	870	760	510
T - % (PM)	-	50.2	-	-
Prop.of commercial vehicles - 16 hr.	-	67.2	-	-

3. OTHER INFORMATION AND COMMENT

**4. Vehicle classification and occupancy - Monday to Friday**

Time		Class of vehicle									
		Motor Cycle	Private Car	Taxi	Private LB	PLB	Goods veh.		Non Fr. Bus	Fr. Bus	
							Light	M & H		SD	DD
0700-0800	Pro	2.1	22.2	5.5	0.0	0.0	8.5	11.6	0.9	0.0	49.2
	Ocp	1.1	1.4	2.2	0.0	0.0	1.3	1.1	23.4	0.0	41.4
0800-0900 Peak hour	Pro	1.1	23.6	1.9	0.0	0.0	7.8	14.8	0.7	0.0	50.1
	Ocp	1.0	1.5	1.9	0.0	0.0	1.7	1.1	6.2	0.0	30.1
0900-1000	Pro	0.4	16.6	2.3	0.0	0.0	7.9	17.1	0.9	0.0	54.8
	Ocp	1.0	1.4	1.8	0.0	0.0	1.3	1.2	14.2	0.0	12.4
1000-1100	Pro	0.2	12.7	3.0	0.2	0.0	11.2	25.6	0.4	0.0	46.6
	Ocp	1.0	1.4	1.7	7.0	0.0	1.3	1.1	1.0	0.0	13.8
1100-1200	Pro	0.7	9.9	2.2	0.2	0.0	13.5	20.9	1.6	0.0	51.1
	Ocp	1.0	1.5	2.1	1.0	0.0	1.4	1.1	2.6	0.0	9.1
1200-1300	Pro	0.3	17.0	2.5	0.0	0.0	8.5	23.6	0.0	0.0	48.1
	Ocp	1.0	1.6	1.8	0.0	0.0	1.4	1.1	0.0	0.0	16.6
1300-1400	Pro	1.3	13.3	0.9	0.0	0.0	12.3	19.1	0.6	0.0	52.5
	Ocp	1.0	1.3	2.0	0.0	0.0	1.4	1.0	1.7	0.0	19.1
1400-1500	Pro	0.5	16.1	2.5	0.2	0.0	12.9	22.9	0.5	0.0	44.4
	Ocp	1.0	1.5	2.1	2.0	0.0	1.3	1.1	1.5	0.0	13.4
1500-1600	Pro	1.0	16.0	2.4	0.5	0.0	10.0	22.8	0.7	0.0	46.6
	Ocp	1.0	1.5	2.1	3.0	0.0	1.4	1.1	1.3	0.0	15.2
1600-1700	Pro	1.3	15.6	1.7	0.0	0.0	10.4	22.7	0.8	0.0	47.5
	Ocp	1.0	1.5	2.3	0.0	0.0	1.6	1.1	1.0	0.0	21.2
1700-1800	Pro	2.6	17.3	2.3	0.4	0.0	11.1	14.5	1.1	0.0	50.8
	Ocp	1.1	1.5	2.2	1.0	0.0	1.6	1.1	11.0	0.0	30.9
1800-1900	Pro	1.1	37.3	1.4	0.0	0.0	5.6	10.0	1.9	0.0	42.7
	Ocp	1.0	1.4	2.3	0.0	0.0	1.3	1.1	16.4	0.0	47.0
1900-2000	Pro	1.1	27.4	2.5	0.0	0.0	5.5	10.3	1.1	0.0	52.1
	Ocp	1.0	1.3	2.5	0.0	0.0	1.2	1.2	1.4	0.0	26.6
2000-2100	Pro	0.3	19.3	1.4	0.0	0.0	2.7	12.9	1.0	0.0	62.4
	Ocp	1.0	1.3	2.3	0.0	0.0	1.1	1.0	11.3	0.0	22.5
2100-2200	Pro	2.0	17.1	3.8	0.0	0.0	6.9	11.3	0.0	0.0	59.0
	Ocp	1.1	1.4	2.2	0.0	0.0	1.3	1.1	0.0	0.0	22.9
2200-2300	Pro	1.2	19.5	4.3	0.0	0.0	2.2	9.6	0.0	0.0	63.2
	Ocp	1.0	1.5	2.4	0.0	0.0	1.4	1.0	0.0	0.0	13.3
16 hours	Pro	1.1	19.2	2.5	0.1	0.0	8.8	16.8	0.8	0.0	50.6
	Ocp	1.0	1.4	2.1	2.6	0.0	1.4	1.1	8.9	0.0	22.9

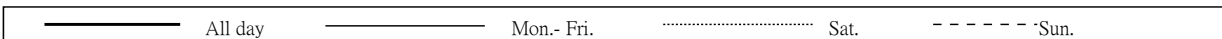
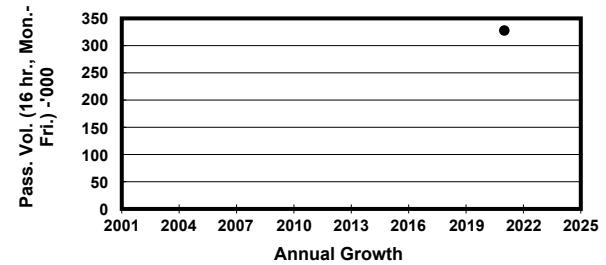
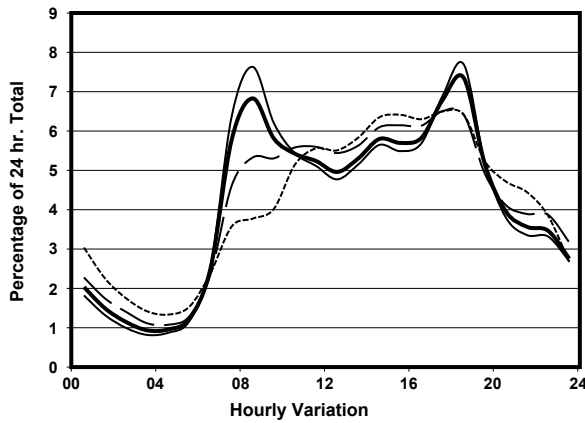
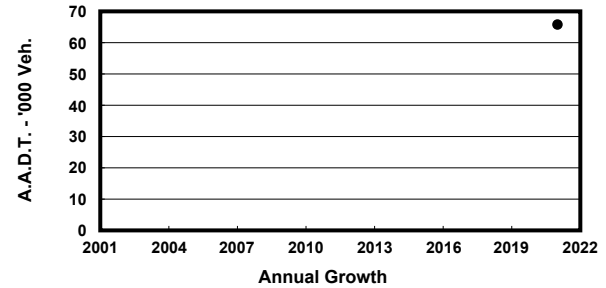
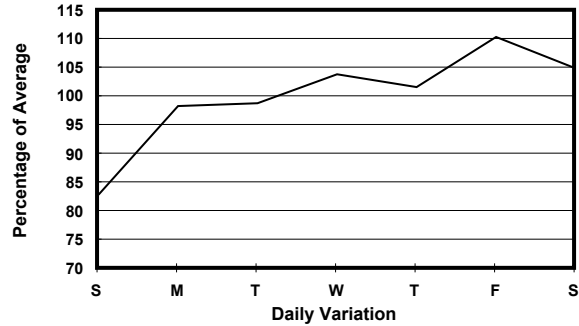
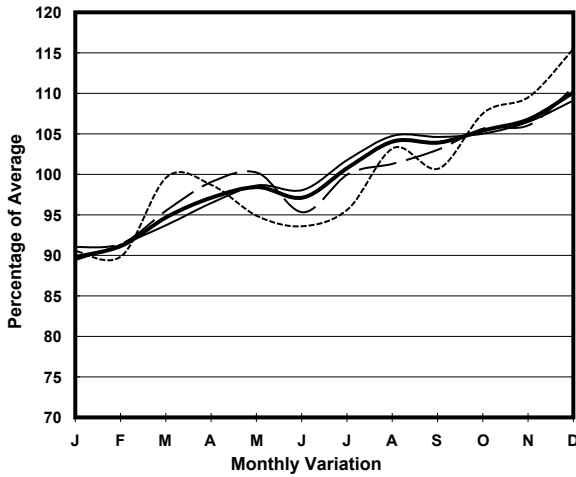
**Legend: Pro.** Proportion of vehicles in % (Sum may not add up to 100% due to figure rounding)\*

**Ocp.** Average occupancy of vehicles including both driver and passengers\*

**M&H** Medium and Heavy

\* All traffic data are collected from combined bounds

1. TRAFFIC FLOW VARIATION AND GROWTH



2. TRAFFIC CHARACTERISTICS (BY DIRECTION)

Parameter	All - Day	Mon. - Fri.	Sat.	Sun.
<b>IN BOUND</b>				
A.A.D.T.	32450	33640	34340	26770
R 12 / 24 - %	71.8	72.6	70.4	68.4
R 16 / 24 - %	87	87.7	85.8	83.8
AM Peak Hour	0800-0900	0800-0900	0700-0800	0700-0800
One-way flow at AM peak hour	2670	3140	2140	1240
T - % (AM)	-	30.2	-	-
PM Peak Hour	1700-1800	1800-1900	1600-1700	1600-1700
One-way flow at PM peak hour	1710	1810	1910	1540
T - % (PM)	-	30.9	-	-
Prop.of commercial vehicles - 16 hr.	-	37.8	-	-
<b>OUT BOUND</b>				
A.A.D.T.	33350	34510	35150	27980
R 12 / 24 - %	69.9	71.6	67.2	62.5
R 16 / 24 - %	86.9	87.8	85.4	83.4
AM Peak Hour	0800-0900	0800-0900	0900-1000	0900-1000
One-way flow at AM peak hour	1820	2060	1660	1030
T - % (AM)	-	35.8	-	-
PM Peak Hour	1800-1900	1800-1900	1800-1900	1800-1900
One-way flow at PM peak hour	3130	3430	2720	2270
T - % (PM)	-	23.5	-	-
Prop.of commercial vehicles - 16 hr.	-	36.1	-	-

3. OTHER INFORMATION AND COMMENT

**4. Vehicle classification and occupancy - Monday to Friday**

Time		Class of vehicle									
		Motor Cycle	Private Car	Taxi	Private LB	PLB	Goods veh.		Non Fr. Bus	Fr. Bus	
							Light	M & H		SD	DD
0700-0800	Pro	5.6	35.6	9.7	0.6	0.0	12.3	14.4	5.4	0.0	16.4
	Ocp	1.1	1.4	2.1	9.0	0.0	1.3	1.1	26.3	0.0	43.3
0800-0900	Pro	3.5	42.6	8.5	0.4	0.0	12.3	14.6	1.9	0.0	16.2
	Ocp	1.0	1.3	2.0	2.4	0.0	1.3	1.1	16.4	0.0	32.6
0900-1000	Pro	1.6	35.6	6.6	0.6	0.0	16.4	19.4	1.6	0.0	18.1
	Ocp	1.0	1.4	1.9	1.5	0.0	1.4	1.2	4.3	0.0	14.4
1000-1100	Pro	1.5	28.6	6.8	0.4	0.0	19.0	25.4	2.1	0.0	16.2
	Ocp	1.2	1.4	1.9	3.0	0.0	1.4	1.1	6.2	0.0	14.6
1100-1200	Pro	2.0	25.6	5.6	0.7	0.0	22.5	24.5	1.6	0.0	17.5
	Ocp	1.0	1.5	2.1	1.4	0.0	1.3	1.1	1.5	0.0	10.5
1200-1300	Pro	2.1	30.6	6.3	0.1	0.0	20.2	24.3	0.7	0.0	15.6
	Ocp	1.0	1.4	2.1	1.0	0.0	1.4	1.2	6.6	0.0	17.6
1300-1400	Pro	1.5	25.5	8.5	0.0	0.0	23.5	21.8	1.7	0.0	17.4
	Ocp	1.0	1.5	1.9	0.0	0.0	1.3	1.1	5.3	0.0	19.6
1400-1500	Pro	1.9	33.1	7.2	0.1	0.0	18.1	23.4	0.9	0.0	15.4
	Ocp	1.1	1.4	2.1	2.0	0.0	1.3	1.1	1.7	0.0	14.8
1500-1600	Pro	1.3	32.1	6.9	0.5	0.0	19.9	20.7	2.6	0.0	16.1
	Ocp	1.2	1.5	1.9	2.8	0.0	1.4	1.1	8.3	0.0	16.1
1600-1700	Pro	1.5	32.2	6.7	0.4	0.0	17.8	23.1	1.7	0.0	16.6
	Ocp	1.1	1.5	1.9	4.7	0.0	1.5	1.1	5.2	0.0	22.8
1700-1800	Pro	4.8	37.7	6.3	0.2	0.0	16.6	15.8	1.8	0.0	16.8
	Ocp	1.1	1.6	2.1	1.0	0.0	1.4	1.1	4.9	0.0	33.0
1800-1900 Peak Hour	Pro	4.3	57.0	4.9	0.2	0.0	7.5	10.1	2.3	0.0	13.7
	Ocp	1.1	1.4	2.1	2.5	0.0	1.3	1.1	17.1	0.0	48.3
1900-2000	Pro	2.1	47.6	10.5	0.0	0.0	9.3	12.0	1.6	0.0	16.9
	Ocp	1.1	1.4	2.2	0.0	0.0	1.3	1.1	5.4	0.0	27.6
2000-2100	Pro	1.8	39.5	11.1	0.0	0.0	9.9	14.3	3.7	0.0	19.6
	Ocp	1.1	1.4	2.0	0.0	0.0	1.4	1.1	18.1	0.0	24.3
2100-2200	Pro	2.1	41.1	10.0	0.0	0.0	9.5	17.0	0.8	0.0	19.4
	Ocp	1.3	1.4	1.8	0.0	0.0	1.3	1.1	7.8	0.0	23.4
2200-2300	Pro	2.1	41.1	11.7	0.7	0.0	6.7	15.6	1.8	0.0	20.3
	Ocp	1.1	1.5	1.9	2.2	0.0	1.5	1.1	3.3	0.0	15.4
16 hours	Pro	2.7	37.1	7.7	0.3	0.0	15.2	18.3	2.1	0.0	16.7
	Ocp	1.1	1.4	2.0	3.2	0.0	1.4	1.1	12.3	0.0	24.5

**Legend: Pro.** Proportion of vehicles in % (Sum may not add up to 100% due to figure rounding)\*

**Ocp.** Average occupancy of vehicles including both driver and passengers\*

**M&H** Medium and Heavy

\* All traffic data are collected from combined bounds

YEAR 2021

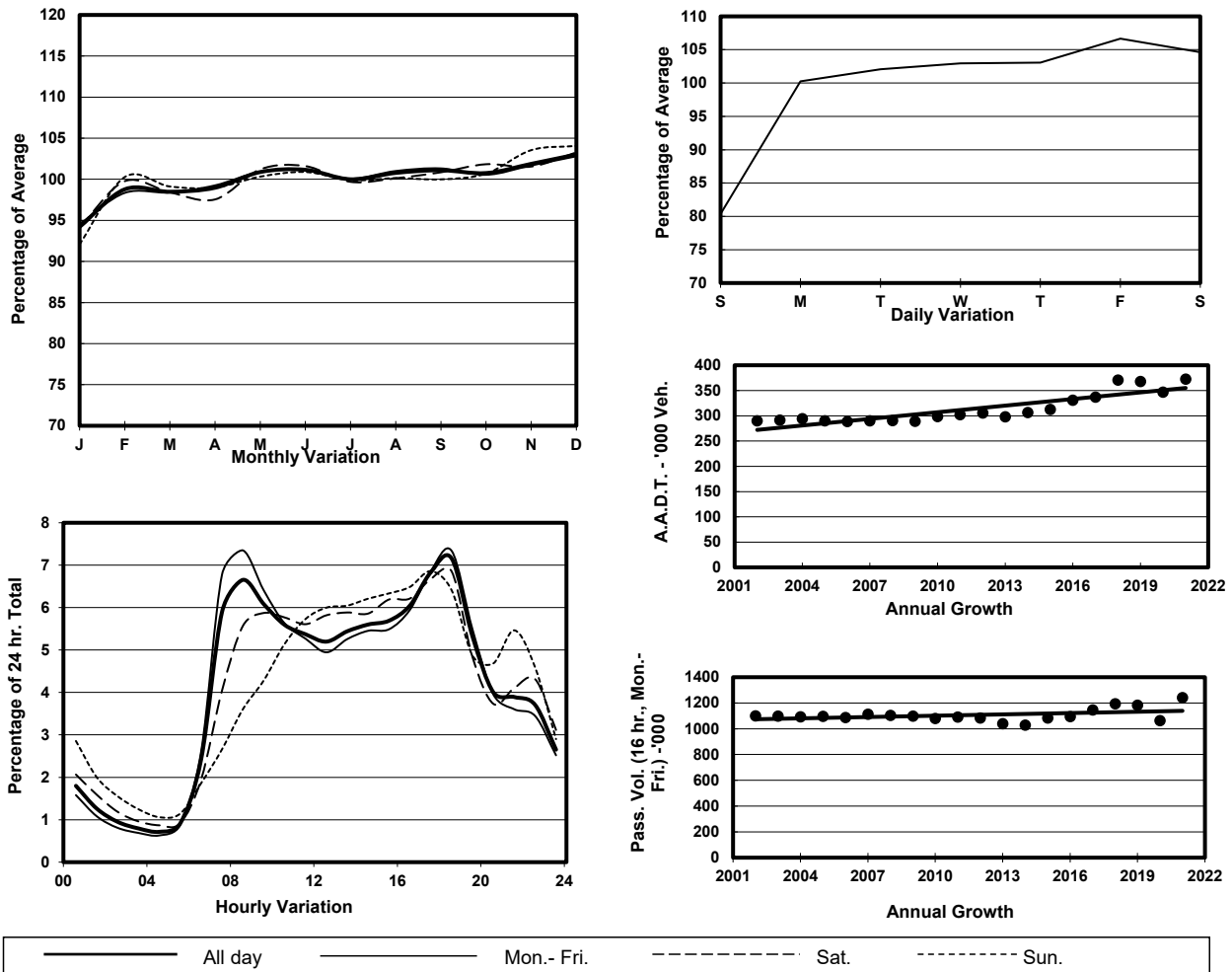
Location

Screenline R-R(North end of Tsuen Wan and Sha Tin)

Stations on Cordon/Screenline

5012, 5013, 5014, 5029, 5042, 6209 and 6210

1. TRAFFIC FLOW VARIATION AND GROWTH



2. TRAFFIC CHARACTERISTICS (BY DIRECTION)

Parameter	All - Day	Mon. - Fri.	Sat.	Sun.
<b>SOUTH BOUND</b>				
A.A.D.T.	186720	194700	196270	151320
R 12 / 24 - %	75.8	77	74.2	69.7
R 16 / 24 - %	88.7	89.1	88.2	86.5
AM Peak Hour	0800-0900	0700-0800	0900-1000	0900-1000
One-way flow at AM peak hour	15280	17760	13950	7490
T - % (AM)	-	17.5	-	-
PM Peak Hour	1800-1900	1800-1900	1800-1900	1700-1800
One-way flow at PM peak hour	11730	12170	12670	10520
T - % (PM)	-	14.8	-	-
Prop.of commercial vehicles - 16 hr.	-	19.1	-	-
<b>NORTH BOUND</b>				
A.A.D.T.	185940	193460	197370	151060
R 12 / 24 - %	67.4	68.4	66.5	61.8
R 16 / 24 - %	88.3	89.3	86.5	84.2
AM Peak Hour	0800-0900	0800-0900	0900-1000	0900-1000
One-way flow at AM peak hour	9520	10830	9170	5460
T - % (AM)	-	21.3	-	-
PM Peak Hour	1800-1900	1800-1900	1800-1900	1700-1800
One-way flow at PM peak hour	14950	16310	14310	10220
T - % (PM)	-	13.2	-	-
Prop.of commercial vehicles - 16 hr.	-	19.6	-	-

3. OTHER INFORMATION AND COMMENT

4. Vehicle classification and occupancy - Monday to Friday

Time		Class of vehicle									
		Motor Cycle	Private Car	Taxi	Private LB	PLB	Goods veh.		Non Fr. Bus	Fr. Bus	
							Light	M & H		SD	DD
0700-0800	Pro	4.6	47.2	7.3	0.6	1.1	19.3	10.8	2.9	0.1	6.1
	Ocp	1.0	1.3	1.8	6.4	10.4	1.4	1.1	17.9	12.2	54.7
0800-0900 Peak Hour	Pro	3.0	50.8	6.4	0.4	0.7	18.7	12.3	1.9	0.1	5.8
	Ocp	1.1	1.3	2.0	4.1	12.1	1.4	1.2	19.4	16.0	48.6
0900-1000	Pro	2.4	44.1	7.5	0.4	0.8	24.0	13.9	0.9	0.1	5.9
	Ocp	1.1	1.3	1.8	1.9	10.3	1.4	1.2	6.3	11.8	24.8
1000-1100	Pro	2.0	39.5	7.3	0.6	0.9	26.8	16.6	0.8	0.1	5.4
	Ocp	1.0	1.3	1.8	2.2	9.6	1.3	1.2	8.5	11.3	24.0
1100-1200	Pro	1.6	40.1	6.9	0.5	0.9	26.5	17.1	0.9	0.1	5.4
	Ocp	1.0	1.3	1.8	2.8	9.7	1.4	1.2	4.2	11.8	22.3
1200-1300	Pro	1.5	44.3	6.1	0.9	0.8	23.1	16.9	1.1	0.1	5.0
	Ocp	1.1	1.3	2.0	4.6	12.0	1.3	1.2	7.7	11.3	26.5
1300-1400	Pro	1.9	41.2	7.0	0.6	0.8	24.8	17.1	1.2	0.1	5.2
	Ocp	1.1	1.3	2.0	4.2	12.7	1.4	1.2	9.6	13.4	29.9
1400-1500	Pro	1.8	41.4	6.1	0.6	0.9	26.1	17.1	1.1	0.1	4.8
	Ocp	1.1	1.4	2.0	2.1	9.8	1.4	1.2	3.7	13.0	25.2
1500-1600	Pro	2.0	43.8	6.5	0.6	0.9	23.3	16.9	0.9	0.1	5.1
	Ocp	1.0	1.3	1.8	2.8	9.6	1.4	1.2	5.2	8.4	25.5
1600-1700	Pro	2.6	43.6	6.0	0.5	0.8	25.4	14.5	1.0	0.1	5.3
	Ocp	1.1	1.4	1.8	2.0	10.1	1.4	1.2	5.2	13.1	31.1
1700-1800	Pro	5.1	50.2	5.5	0.3	0.9	22.1	9.1	1.2	0.1	5.7
	Ocp	1.1	1.3	1.8	3.3	13.1	1.4	1.1	9.5	13.3	43.1
1800-1900	Pro	3.7	62.7	4.8	0.2	0.9	13.9	6.4	2.1	0.1	5.4
	Ocp	1.1	1.3	1.9	2.0	12.7	1.3	1.1	20.7	25.4	61.3
1900-2000	Pro	2.5	65.5	6.4	0.1	1.0	10.1	6.4	1.6	0.1	6.3
	Ocp	1.1	1.3	1.7	3.5	10.7	1.3	1.1	19.9	19.2	43.6
2000-2100	Pro	2.7	60.4	9.5	0.1	1.2	10.9	7.2	1.0	0.1	6.9
	Ocp	1.1	1.2	1.7	1.0	9.3	1.2	1.1	10.8	9.6	33.9
2100-2200	Pro	3.5	59.0	10.8	0.1	1.3	10.8	6.5	0.7	0.1	7.1
	Ocp	1.1	1.3	1.8	1.0	9.2	1.3	1.1	4.6	10.3	32.1
2200-2300	Pro	2.9	61.2	11.7	0.1	1.6	9.0	5.8	0.7	0.1	7.0
	Ocp	1.1	1.3	1.8	1.0	7.6	1.3	1.1	7.6	7.4	28.6
16 hours	Pro	2.8	49.3	6.9	0.4	0.9	20.2	12.3	1.3	0.1	5.7
	Ocp	1.1	1.3	1.8	3.3	10.6	1.4	1.2	12.9	12.7	36.4

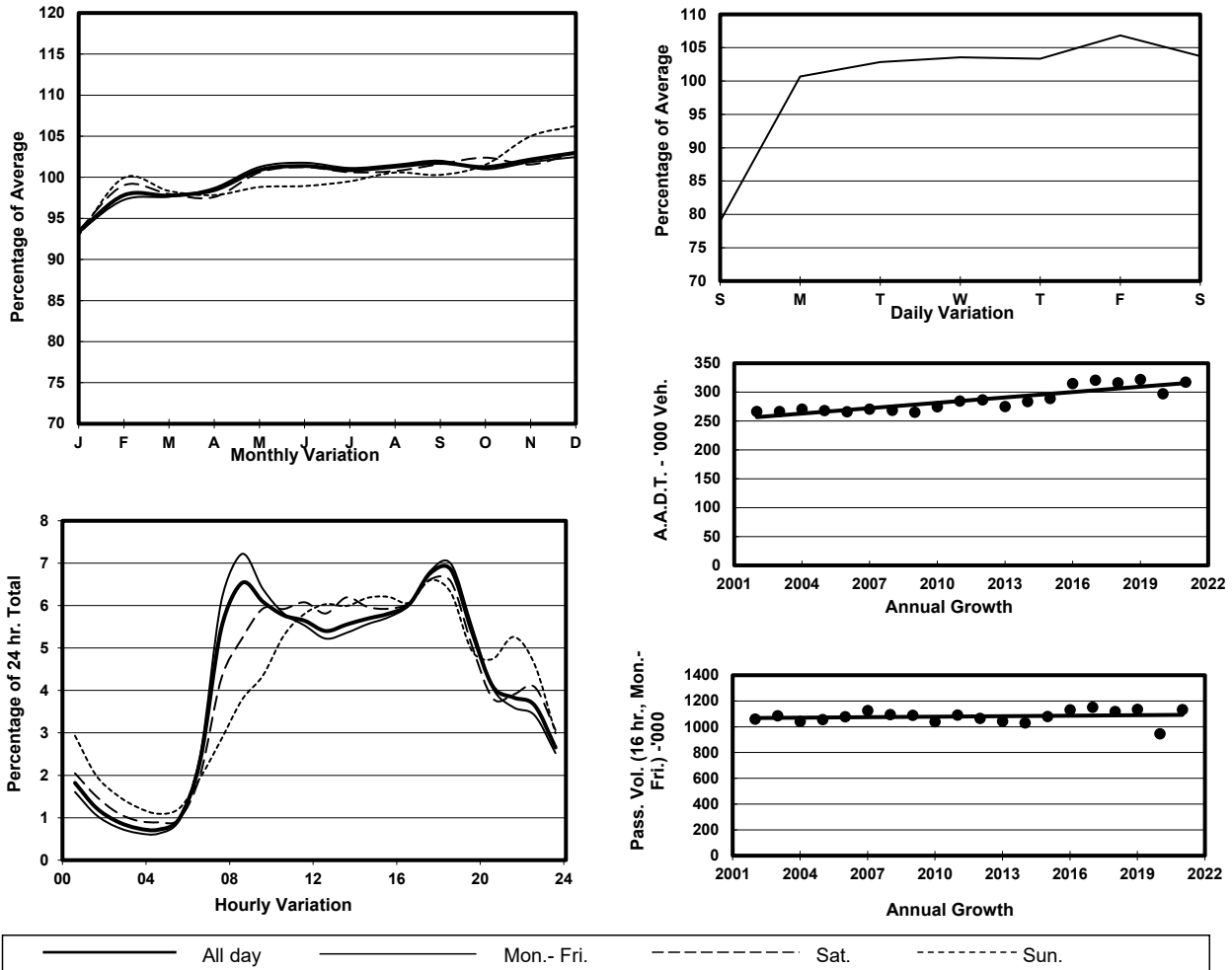
**Legend: Pro.** Proportion of vehicles in % (Sum may not add up to 100% due to figure rounding)\*

**Ocp.** Average occupancy of vehicles including both driver and passengers\*

**M&H** Medium and Heavy

\* All traffic data are collected from combined bounds

1. TRAFFIC FLOW VARIATION AND GROWTH



2. TRAFFIC CHARACTERISTICS (BY DIRECTION)

Parameter	All - Day	Mon. - Fri.	Sat.	Sun.
<b>EAST BOUND</b>				
A.A.D.T.	158880	166580	166960	125100
R 12 / 24 - %	74.7	76	73.2	68.3
R 16 / 24 - %	89.1	89.7	88.2	85.9
AM Peak Hour	0800-0900	0800-0900	0900-1000	0900-1000
One-way flow at AM peak hour	12500	14660	11630	6150
T - % (AM)	-	23.7	-	-
PM Peak Hour	1700-1800	1700-1800	1700-1800	1700-1800
One-way flow at PM peak hour	10000	10550	10080	7930
T - % (PM)	-	20.3	-	-
Prop.of commercial vehicles - 16 hr.	-	23.4	-	-
<b>WEST BOUND</b>				
A.A.D.T.	158280	165470	165590	127840
R 12 / 24 - %	68.4	69.4	68	62.7
R 16 / 24 - %	88	88.9	86.6	84.1
AM Peak Hour	0800-0900	0800-0900	0900-1000	0900-1000
One-way flow at AM peak hour	8230	9310	8100	4870
T - % (AM)	-	25.9	-	-
PM Peak Hour	1800-1900	1800-1900	1700-1800	1800-1900
One-way flow at PM peak hour	12280	13230	11920	8870
T - % (PM)	-	16.3	-	-
Prop.of commercial vehicles - 16 hr.	-	23.5	-	-

3. OTHER INFORMATION AND COMMENT



4. Vehicle classification and occupancy - Monday to Friday

Time		Class of vehicle									
		Motor Cycle	Private Car	Taxi	Private LB	PLB	Goods veh.		Non Fr. Bus	Fr. Bus	
							Light	M & H		SD	DD
0700-0800	Pro	4.2	45.7	6.8	0.6	2.3	17.5	13.1	2.9	0.1	7.0
	Ocp	1.1	1.3	2.0	8.2	13.1	1.4	1.1	21.2	18.9	54.8
0800-0900 Peak Hour	Pro	2.6	47.6	5.7	0.7	1.5	17.2	16.0	2.1	0.1	6.4
	Ocp	1.1	1.3	2.0	4.7	13.8	1.4	1.2	22.9	19.0	48.0
0900-1000	Pro	1.8	42.8	6.8	0.4	1.6	22.0	17.2	1.0	0.1	6.3
	Ocp	1.1	1.3	1.8	1.7	10.3	1.4	1.2	8.0	8.8	24.4
1000-1100	Pro	1.5	35.8	6.6	0.5	1.9	24.7	22.4	0.8	0.1	5.8
	Ocp	1.0	1.3	1.9	2.2	8.6	1.3	1.2	10.1	11.9	23.3
1100-1200	Pro	1.3	35.3	6.2	0.6	1.6	24.9	23.4	0.9	0.1	5.7
	Ocp	1.1	1.3	2.0	2.8	9.9	1.4	1.2	6.7	12.1	21.1
1200-1300	Pro	1.1	42.4	5.7	0.9	1.6	21.3	20.5	1.0	0.1	5.4
	Ocp	1.1	1.3	1.9	5.1	12.0	1.3	1.2	10.1	11.2	25.5
1300-1400	Pro	1.4	40.5	6.5	0.7	1.4	23.2	19.4	1.1	0.1	5.8
	Ocp	1.1	1.3	2.0	7.0	12.3	1.4	1.2	14.2	13.7	27.9
1400-1500	Pro	1.4	37.7	5.7	0.7	1.5	23.9	22.7	1.0	0.1	5.4
	Ocp	1.1	1.4	2.1	2.4	11.6	1.4	1.2	5.9	13.5	24.1
1500-1600	Pro	1.4	39.5	6.2	0.6	1.6	23.1	21.1	1.0	0.1	5.5
	Ocp	1.0	1.3	1.9	2.8	9.5	1.4	1.2	6.0	9.6	24.2
1600-1700	Pro	2.0	40.5	5.0	0.9	1.4	23.9	19.5	1.0	0.1	5.7
	Ocp	1.1	1.4	1.9	2.6	10.8	1.4	1.2	8.5	13.0	30.8
1700-1800	Pro	3.7	48.2	5.1	0.5	1.4	21.2	12.3	1.3	0.1	6.2
	Ocp	1.0	1.3	1.9	2.6	13.7	1.4	1.1	11.4	13.8	43.5
1800-1900	Pro	3.2	60.7	4.8	0.2	1.6	12.7	8.6	2.0	0.1	6.1
	Ocp	1.1	1.3	2.0	2.3	15.2	1.3	1.1	22.5	29.5	60.2
1900-2000	Pro	2.5	62.9	7.1	0.1	1.6	9.9	7.3	1.6	0.1	6.7
	Ocp	1.1	1.3	1.7	1.2	12.8	1.3	1.1	20.0	18.7	41.3
2000-2100	Pro	2.7	58.2	9.0	0.1	2.3	10.6	8.6	1.2	0.1	7.2
	Ocp	1.1	1.3	1.7	1.2	10.4	1.2	1.1	13.4	11.1	32.1
2100-2200	Pro	3.2	56.9	10.9	0.1	1.7	9.8	8.5	0.9	0.1	7.9
	Ocp	1.1	1.3	1.8	1.2	9.1	1.3	1.1	6.7	9.4	30.7
2200-2300	Pro	2.7	58.7	11.0	0.1	1.8	9.3	7.6	0.8	0.1	7.8
	Ocp	1.1	1.4	1.9	2.1	10.6	1.3	1.1	10.8	7.5	27.2
16 hours	Pro	2.3	46.5	6.5	0.5	1.7	19.0	15.9	1.3	0.1	6.2
	Ocp	1.1	1.3	1.9	3.8	11.7	1.4	1.2	15.1	13.7	35.3

**Legend: Pro.** Proportion of vehicles in % (Sum may not add up to 100% due to figure rounding)\*

**Ocp.** Average occupancy of vehicles including both driver and passengers\*

**M&H** Medium and Heavy

\* All traffic data are collected from combined bounds

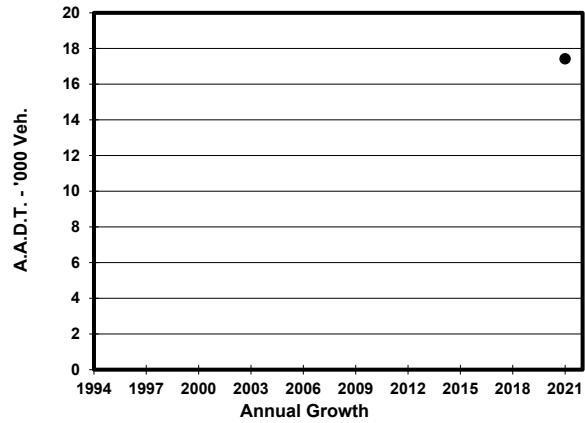
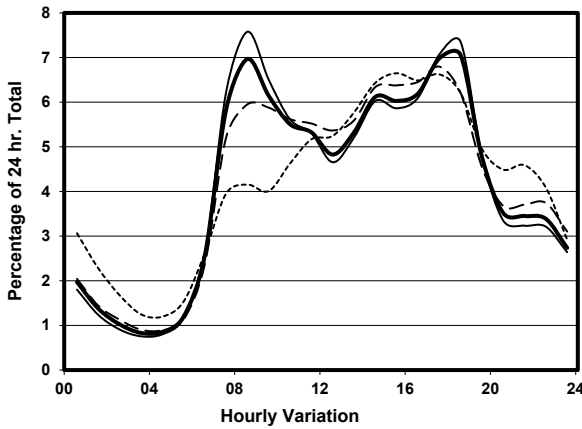
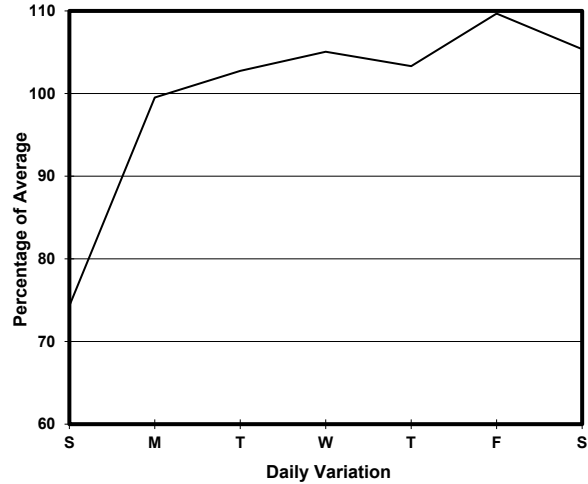
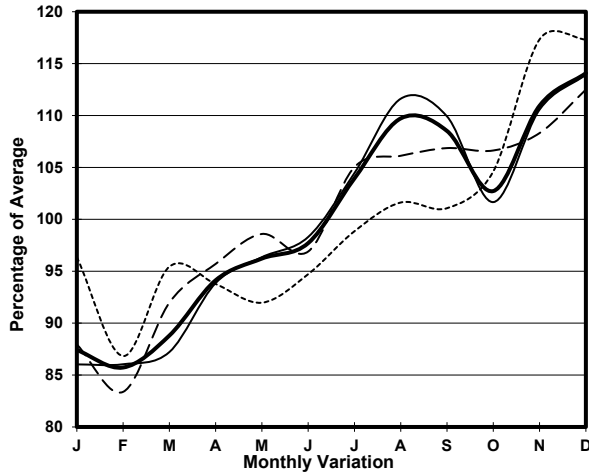
Amended Pages

YEAR 2021  
 CORE STATION 5042  
 ROAD NETWORK MAJOR  
 ROAD TYPE URBAN TRUNK ROAD

LINK TUEN MUN CHEK LAP KOK TUNNEL (from LUNG FU RD to HONG KONG BOUNDARY CROSSING FACILITIES (BCF))



1. TRAFFIC FLOW VARIATION AND GROWTH



— All day    — Mon.- Fri.    - - - - Sat.    - - - - - Sun.

2. TRAFFIC CHARACTERISTICS (BY DIRECTION)

Parameter	All - Day	Mon. - Fri.	Sat.	Sun.
<b>SOUTH BOUND</b>				
A.A.D.T.	8720	9260	9230	6410
R 12 / 24 - %	74.9	76	73.8	69.1
R 16 / 24 - %	87.7	88.2	87.6	84
AM Peak Hour	0800-0900	0800-0900	0700-0800	0700-0800
One-way flow at AM peak hour	800	950	690	330
T - % (AM)	-	32.9	-	-
PM Peak Hour	1700-1800	1700-1800	1700-1800	1600-1700
One-way flow at PM peak hour	480	500	510	370
T - % (PM)	-	41.1	-	-
Prop.of commercial vehicles - 16 hr.	-	41.3	-	-
<b>NORTH BOUND</b>				
A.A.D.T.	8700	9160	9400	6610
R 12 / 24 - %	69.7	71	68.9	61.7
R 16 / 24 - %	87.2	88	86.5	83
AM Peak Hour	0800-0900	0800-0900	0800-0900	0800-0900
One-way flow at AM peak hour	410	440	450	250
T - % (AM)	-	41.1	-	-
PM Peak Hour	1800-1900	1800-1900	1700-1800	1700-1800
One-way flow at PM peak hour	780	870	760	510
T - % (PM)	-	21.4	-	-
Prop.of commercial vehicles - 16 hr.	-	38.1	-	-

3. OTHER INFORMATION AND COMMENT

**4. Vehicle classification and occupancy - Monday to Friday**

Time		Class of vehicle									
		Motor Cycle	Private Car	Taxi	Private LB	PLB	Goods veh.		Non Fr. Bus	Fr. Bus	
							Light	M & H		SD	DD
0700-0800	Pro	3.9	41.2	10.2	0.0	0.0	15.8	21.5	1.8	0.0	5.7
	Ocp	1.1	1.4	2.2	0.0	0.0	1.3	1.1	23.4	0.0	41.4
0800-0900 Peak hour	Pro	2.1	44.5	3.5	0.0	0.0	14.7	27.9	1.3	0.0	5.9
	Ocp	1.0	1.5	1.9	0.0	0.0	1.7	1.1	6.2	0.0	30.1
0900-1000	Pro	0.7	34.1	4.8	0.0	0.0	16.3	35.2	1.9	0.0	7.0
	Ocp	1.0	1.4	1.8	0.0	0.0	1.3	1.2	14.2	0.0	12.4
1000-1100	Pro	0.4	22.6	5.4	0.4	0.0	19.9	45.5	0.8	0.0	5.2
	Ocp	1.0	1.4	1.7	7.0	0.0	1.3	1.1	1.0	0.0	13.8
1100-1200	Pro	1.3	18.9	4.3	0.4	0.0	25.8	40.0	3.0	0.0	6.1
	Ocp	1.0	1.5	2.1	1.0	0.0	1.4	1.1	2.6	0.0	9.1
1200-1300	Pro	0.5	31.1	4.6	0.0	0.0	15.5	42.9	0.0	0.0	5.5
	Ocp	1.0	1.6	1.8	0.0	0.0	1.4	1.1	0.0	0.0	16.6
1300-1400	Pro	2.5	26.2	1.7	0.0	0.0	24.1	37.7	1.3	0.0	6.5
	Ocp	1.0	1.3	2.0	0.0	0.0	1.4	1.0	1.7	0.0	19.1
1400-1500	Pro	0.8	27.6	4.3	0.4	0.0	22.2	39.3	0.8	0.0	4.8
	Ocp	1.0	1.5	2.1	2.0	0.0	1.3	1.1	1.5	0.0	13.4
1500-1600	Pro	1.7	28.4	4.3	0.9	0.0	17.7	40.5	1.3	0.0	5.2
	Ocp	1.0	1.5	2.1	3.0	0.0	1.4	1.1	1.3	0.0	15.2
1600-1700	Pro	2.3	28.2	3.0	0.0	0.0	18.8	40.9	1.5	0.0	5.4
	Ocp	1.0	1.5	2.3	0.0	0.0	1.6	1.1	1.0	0.0	21.2
1700-1800	Pro	5.1	33.0	4.4	0.7	0.0	21.2	27.6	2.0	0.0	6.1
	Ocp	1.1	1.5	2.2	1.0	0.0	1.6	1.1	11.0	0.0	30.9
1800-1900	Pro	1.8	62.2	2.3	0.0	0.0	9.4	16.7	3.2	0.0	4.5
	Ocp	1.0	1.4	2.3	0.0	0.0	1.3	1.1	16.4	0.0	47.0
1900-2000	Pro	2.2	53.5	4.9	0.0	0.0	10.7	20.1	2.2	0.0	6.4
	Ocp	1.0	1.3	2.5	0.0	0.0	1.2	1.2	1.4	0.0	26.6
2000-2100	Pro	0.8	46.5	3.3	0.0	0.0	6.5	31.0	2.4	0.0	9.4
	Ocp	1.0	1.3	2.3	0.0	0.0	1.1	1.0	11.3	0.0	22.5
2100-2200	Pro	4.5	38.1	8.4	0.0	0.0	15.5	25.2	0.0	0.0	8.2
	Ocp	1.1	1.4	2.2	0.0	0.0	1.3	1.1	0.0	0.0	22.9
2200-2300	Pro	3.0	47.8	10.6	0.0	0.0	5.3	23.5	0.0	0.0	9.7
	Ocp	1.0	1.5	2.4	0.0	0.0	1.4	1.0	0.0	0.0	13.3
16 hours	Pro	2.1	36.6	4.7	0.2	0.0	16.7	32.0	1.6	0.0	6.0
	Ocp	1.0	1.4	2.1	2.6	0.0	1.4	1.1	8.9	0.0	22.9

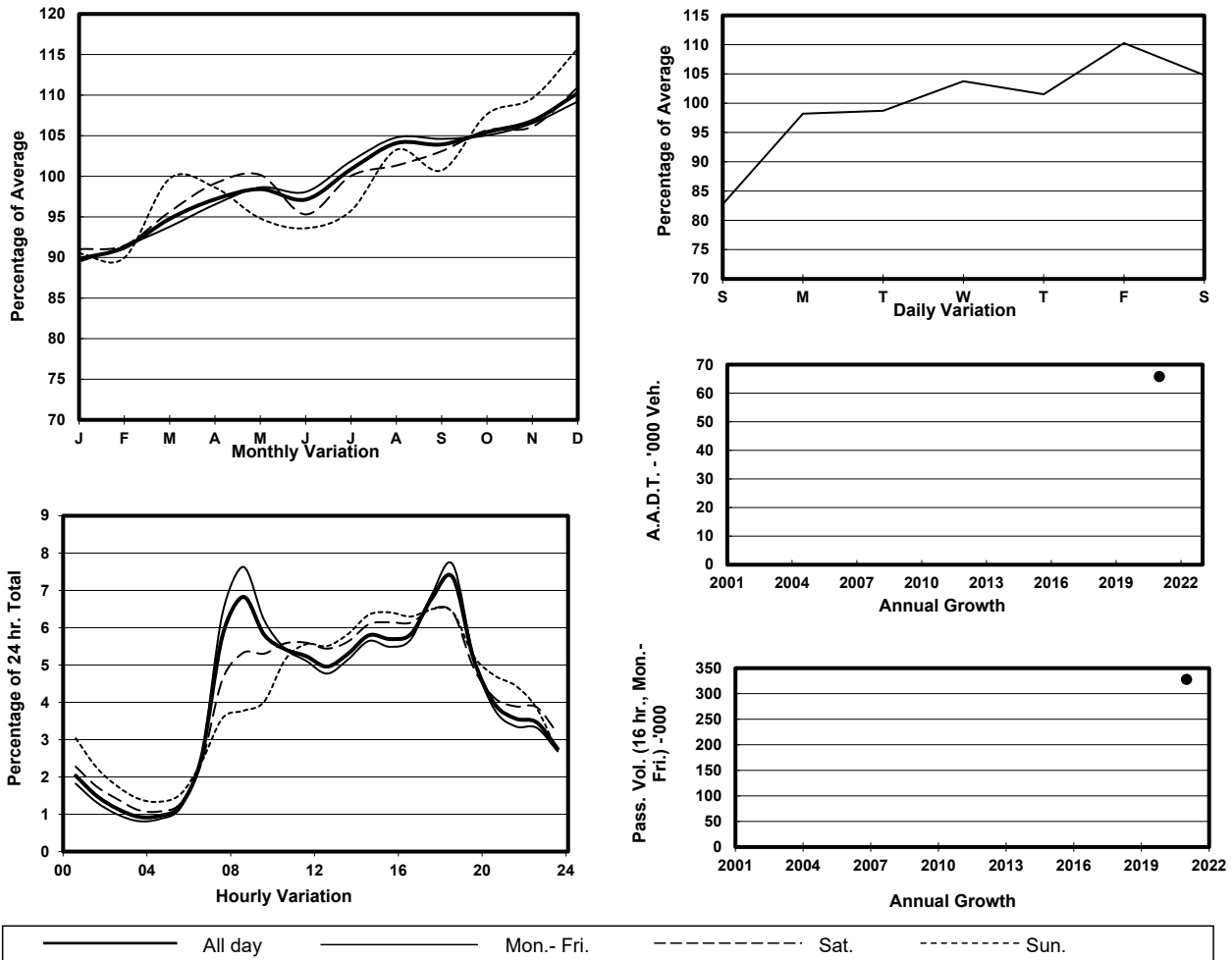
**Legend: Pro.** Proportion of vehicles in % (Sum may not add up to 100% due to figure rounding)\*

**Ocp.** Average occupancy of vehicles including both driver and passengers\*

**M&H** Medium and Heavy

\* All traffic data are collected from combined bounds

1. TRAFFIC FLOW VARIATION AND GROWTH



2. TRAFFIC CHARACTERISTICS (BY DIRECTION)

Parameter	All - Day	Mon. - Fri.	Sat.	Sun.
<b>IN BOUND</b>				
A.A.D.T.	32450	33640	34340	26770
R 12 / 24 - %	71.8	72.6	70.4	68.4
R 16 / 24 - %	87	87.7	85.8	83.8
AM Peak Hour	0800-0900	0800-0900	0700-0800	0700-0800
One-way flow at AM peak hour	2670	3140	2140	1240
T - % (AM)	-	22.2	-	-
PM Peak Hour	1700-1800	1800-1900	1600-1700	1600-1700
One-way flow at PM peak hour	1710	1810	1910	1540
T - % (PM)	-	22.3	-	-
Prop.of commercial vehicles - 16 hr.	-	30.3	-	-
<b>OUT BOUND</b>				
A.A.D.T.	33350	34510	35150	27980
R 12 / 24 - %	69.9	71.6	67.2	62.5
R 16 / 24 - %	86.9	87.8	85.4	83.4
AM Peak Hour	0800-0900	0800-0900	0900-1000	0900-1000
One-way flow at AM peak hour	1820	2060	1660	1030
T - % (AM)	-	28.1	-	-
PM Peak Hour	1800-1900	1800-1900	1800-1900	1800-1900
One-way flow at PM peak hour	3130	3430	2720	2270
T - % (PM)	-	16.3	-	-
Prop.of commercial vehicles - 16 hr.	-	28.6	-	-

3. OTHER INFORMATION AND COMMENT

**Lantau External Cordon  
Year 2021**

**4. Vehicle classification and occupancy - Monday to Friday**

Time		Class of vehicle									
		Motor Cycle	Private Car	Taxi	Private LB	PLB	Goods veh.		Non Fr. Bus	Fr. Bus	
							Light	M & H		SD	DD
0700-0800	Pro	6.1	40.6	10.9	0.6	0.0	14.2	17.0	5.6	0.0	4.9
	Ocp	1.1	1.4	2.1	9.0	0.0	1.3	1.1	26.2	0.0	47.8
0800-0900	Pro	3.8	48.2	8.9	0.4	0.0	14.2	18.1	2.0	0.0	4.3
	Ocp	1.0	1.3	2.0	2.4	0.0	1.4	1.1	15.5	0.0	39.4
0900-1000	Pro	1.8	40.5	7.3	0.6	0.0	18.8	24.5	1.9	0.0	4.6
	Ocp	1.0	1.4	1.9	1.5	0.0	1.4	1.2	5.7	0.0	20.1
1000-1100	Pro	1.6	31.3	7.4	0.5	0.0	21.4	31.0	2.2	0.0	4.7
	Ocp	1.2	1.4	1.9	3.4	0.0	1.4	1.1	6.0	0.0	16.4
1100-1200	Pro	2.2	28.2	6.1	0.8	0.0	25.9	29.9	2.0	0.0	4.9
	Ocp	1.0	1.5	2.1	1.3	0.0	1.3	1.1	1.7	0.0	14.3
1200-1300	Pro	2.1	34.3	6.9	0.1	0.0	22.1	29.4	0.7	0.0	4.4
	Ocp	1.0	1.4	2.1	1.0	0.0	1.4	1.2	6.6	0.0	20.2
1300-1400	Pro	1.9	29.0	8.7	0.0	0.0	26.8	26.9	1.9	0.0	4.8
	Ocp	1.0	1.5	1.9	0.0	0.0	1.3	1.1	5.0	0.0	20.9
1400-1500	Pro	2.0	36.4	7.7	0.1	0.0	20.7	28.1	1.0	0.0	4.0
	Ocp	1.1	1.4	2.1	2.0	0.0	1.3	1.1	1.7	0.0	18.5
1500-1600	Pro	1.6	35.6	7.4	0.6	0.0	22.1	25.8	2.7	0.0	4.1
	Ocp	1.2	1.5	2.0	2.8	0.0	1.4	1.1	7.9	0.0	18.6
1600-1700	Pro	1.8	35.8	7.1	0.4	0.0	20.2	28.4	1.8	0.0	4.4
	Ocp	1.1	1.5	1.9	4.7	0.0	1.5	1.1	4.8	0.0	27.0
1700-1800	Pro	5.5	42.0	6.9	0.3	0.0	19.4	19.5	2.0	0.0	4.5
	Ocp	1.1	1.6	2.1	1.0	0.0	1.4	1.1	5.7	0.0	38.7
1800-1900	Pro	4.5	63.4	5.2	0.2	0.0	8.4	11.8	2.6	0.0	3.9
	Ocp	1.1	1.4	2.1	2.5	0.0	1.3	1.1	17.0	0.0	51.7
1900-2000	Pro	2.3	54.2	11.0	0.0	0.0	10.6	14.4	1.9	0.0	5.5
	Ocp	1.1	1.4	2.2	0.0	0.0	1.2	1.1	4.8	0.0	29.8
2000-2100	Pro	1.9	46.0	11.6	0.0	0.0	10.8	18.6	4.1	0.0	7.0
	Ocp	1.1	1.4	2.0	0.0	0.0	1.4	1.1	17.6	0.0	27.7
2100-2200	Pro	2.7	46.6	11.3	0.0	0.0	11.8	20.6	0.8	0.0	6.2
	Ocp	1.3	1.4	1.9	0.0	0.0	1.3	1.1	7.8	0.0	24.5
2200-2300	Pro	2.6	48.5	13.4	0.7	0.0	7.5	19.2	1.8	0.0	6.3
	Ocp	1.1	1.5	1.9	2.2	0.0	1.5	1.1	3.3	0.0	20.1
16 hours	Pro	2.9	41.7	8.3	0.3	0.0	17.3	22.4	2.3	0.0	4.8
	Ocp	1.1	1.4	2.0	3.2	0.0	1.4	1.1	12.0	0.0	28.4

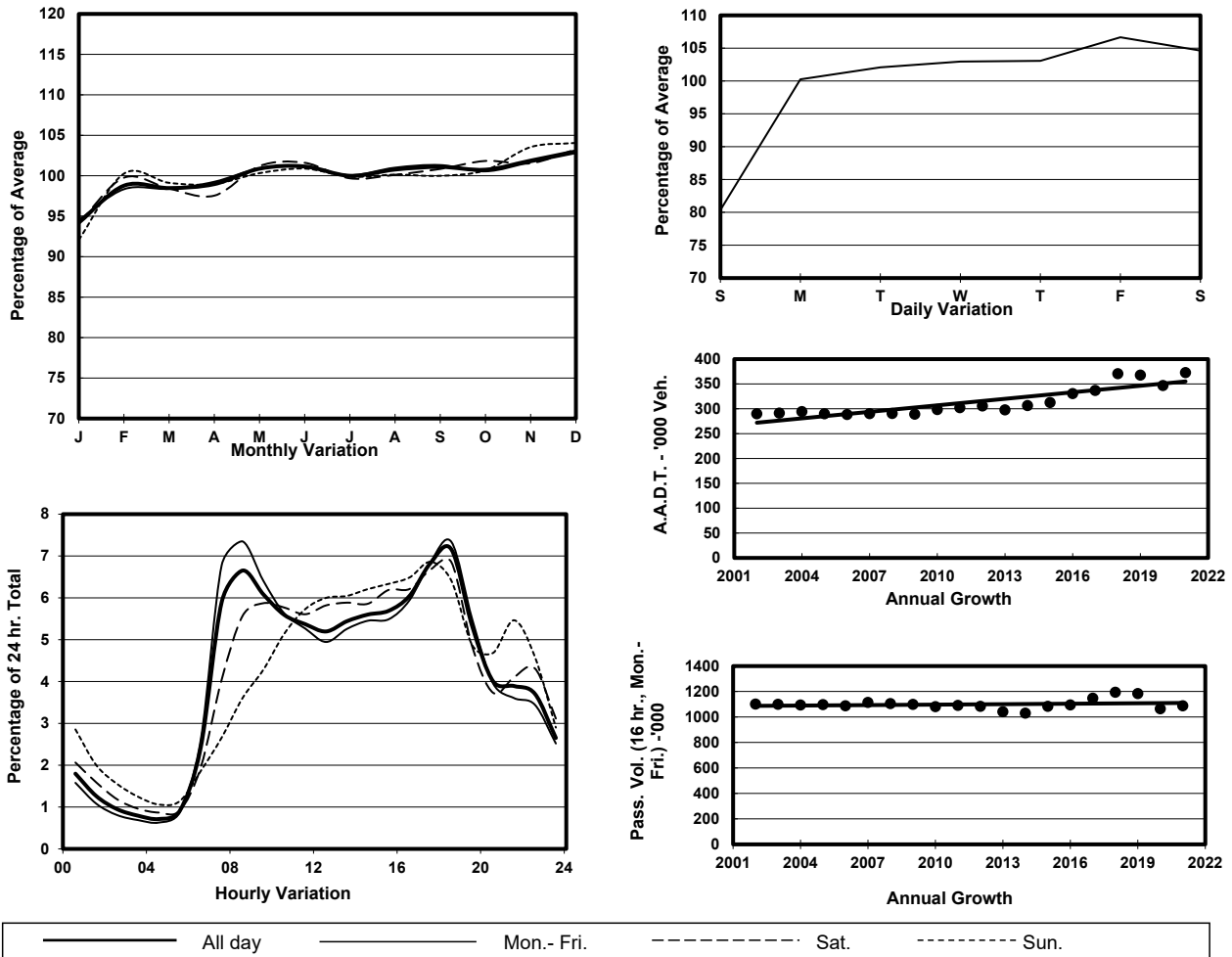
**Legend: Pro.** Proportion of vehicles in % (Sum may not add up to 100% due to figure rounding)\*

**Ocp.** Average occupancy of vehicles including both driver and passengers\*

**M&H** Medium and Heavy

\* All traffic data are collected from combined bounds

1. TRAFFIC FLOW VARIATION AND GROWTH



2. TRAFFIC CHARACTERISTICS (BY DIRECTION)

Parameter	All - Day	Mon. - Fri.	Sat.	Sun.
<b>SOUTH BOUND</b>				
A.A.D.T.	186720	194700	196270	151320
R 12 / 24 - %	75.8	77	74.2	69.7
R 16 / 24 - %	88.7	89.1	88.2	86.5
AM Peak Hour	0800-0900	0700-0800	0900-1000	0900-1000
One-way flow at AM peak hour	15280	17760	13950	7490
T - % (AM)	-	16.3	-	-
PM Peak Hour	1800-1900	1800-1900	1800-1900	1700-1800
One-way flow at PM peak hour	11730	12170	12670	10520
T - % (PM)	-	13.6	-	-
Prop.of commercial vehicles - 16 hr.	-	17.8	-	-
<b>NORTH BOUND</b>				
A.A.D.T.	185940	193460	197370	151060
R 12 / 24 - %	67.4	68.4	66.5	61.8
R 16 / 24 - %	88.3	89.3	86.5	84.2
AM Peak Hour	0800-0900	0800-0900	0900-1000	0900-1000
One-way flow at AM peak hour	9520	10830	9170	5460
T - % (AM)	-	19.8	-	-
PM Peak Hour	1800-1900	1800-1900	1800-1900	1700-1800
One-way flow at PM peak hour	14950	16310	14310	10220
T - % (PM)	-	11.7	-	-
Prop.of commercial vehicles - 16 hr.	-	18.3	-	-

3. OTHER INFORMATION AND COMMENT

**4. Vehicle classification and occupancy - Monday to Friday**

Time		Class of vehicle									
		Motor Cycle	Private Car	Taxi	Private LB	PLB	Goods veh.		Non Fr. Bus	Fr. Bus	
							Light	M & H		SD	DD
0700-0800	Pro	4.7	48.0	7.5	0.6	1.1	19.6	11.3	2.9	0.1	4.2
	Ocp	1.0	1.3	1.8	6.4	10.4	1.4	1.1	17.9	12.2	60.7
0800-0900 Peak Hour	Pro	3.1	51.8	6.5	0.4	0.7	19.0	12.9	1.9	0.1	3.7
	Ocp	1.1	1.3	2.0	4.1	12.1	1.4	1.2	19.2	16.0	59.4
0900-1000	Pro	2.4	45.0	7.6	0.4	0.8	24.5	14.8	1.0	0.1	3.6
	Ocp	1.1	1.3	1.8	1.9	10.3	1.4	1.2	6.7	11.8	32.7
1000-1100	Pro	2.0	40.0	7.4	0.6	0.9	27.2	17.5	0.8	0.1	3.5
	Ocp	1.0	1.3	1.8	2.3	9.6	1.3	1.2	8.4	11.3	29.8
1100-1200	Pro	1.7	40.5	7.0	0.5	0.9	27.1	18.1	1.0	0.1	3.2
	Ocp	1.0	1.3	1.8	2.7	9.7	1.4	1.2	4.1	11.8	31.2
1200-1300	Pro	1.5	44.9	6.2	0.9	0.8	23.5	17.8	1.1	0.1	3.1
	Ocp	1.1	1.3	2.0	4.6	12.0	1.3	1.2	7.7	11.3	32.4
1300-1400	Pro	2.0	41.8	7.1	0.6	0.8	25.4	17.9	1.2	0.1	3.1
	Ocp	1.1	1.3	2.0	4.2	12.7	1.4	1.2	9.4	13.4	37.5
1400-1500	Pro	1.8	42.0	6.2	0.6	0.9	26.6	18.0	1.2	0.1	2.7
	Ocp	1.1	1.4	2.0	2.1	9.8	1.4	1.2	3.6	13.0	34.1
1500-1600	Pro	2.1	44.4	6.6	0.6	0.9	23.7	17.8	0.9	0.1	3.0
	Ocp	1.0	1.3	1.8	2.8	9.6	1.4	1.2	5.1	8.4	32.8
1600-1700	Pro	2.7	44.2	6.1	0.5	0.8	25.8	15.4	1.1	0.1	3.3
	Ocp	1.1	1.4	1.8	2.0	10.1	1.4	1.2	5.1	13.1	37.3
1700-1800	Pro	5.2	50.9	5.6	0.3	0.9	22.6	9.7	1.2	0.1	3.6
	Ocp	1.1	1.3	1.8	3.1	13.1	1.4	1.1	9.6	13.3	50.6
1800-1900	Pro	3.7	63.9	4.8	0.2	0.9	14.0	6.8	2.1	0.1	3.6
	Ocp	1.1	1.3	1.9	2.0	12.7	1.3	1.1	20.5	25.4	68.6
1900-2000	Pro	2.5	66.6	6.5	0.1	1.0	10.3	6.8	1.6	0.1	4.4
	Ocp	1.1	1.3	1.7	3.5	10.7	1.3	1.1	19.4	19.2	50.8
2000-2100	Pro	2.7	61.5	9.5	0.1	1.2	11.0	8.0	1.1	0.1	4.8
	Ocp	1.1	1.2	1.7	1.0	9.3	1.2	1.1	10.9	9.6	38.9
2100-2200	Pro	3.6	59.9	11.0	0.1	1.3	11.2	7.1	0.7	0.1	5.0
	Ocp	1.1	1.3	1.8	1.0	9.2	1.3	1.1	4.6	10.3	36.1
2200-2300	Pro	3.0	62.4	12.0	0.1	1.6	9.1	6.4	0.7	0.1	4.7
	Ocp	1.1	1.3	1.9	1.0	7.6	1.3	1.1	7.6	7.4	36.4
16 hours	Pro	2.9	50.1	7.0	0.4	0.9	20.5	13.0	1.4	0.1	3.6
	Ocp	1.1	1.3	1.9	3.3	10.6	1.4	1.2	12.8	12.7	44.0

**Legend: Pro.** Proportion of vehicles in % (Sum may not add up to 100% due to figure rounding)\*

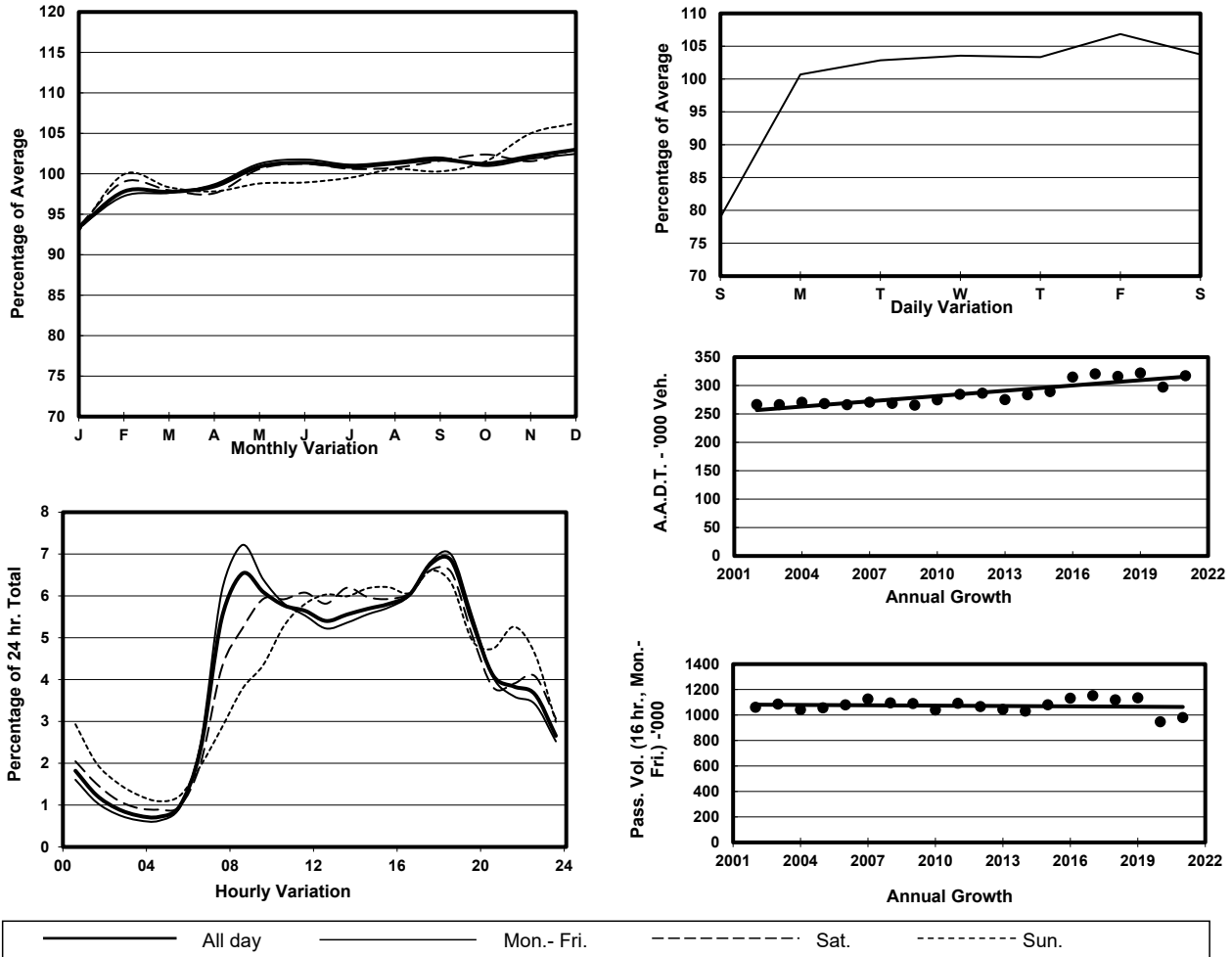
**Ocp.** Average occupancy of vehicles including both driver and passengers\*

**M&H** Medium and Heavy

\* All traffic data are collected from combined bounds



1. TRAFFIC FLOW VARIATION AND GROWTH



2. TRAFFIC CHARACTERISTICS (BY DIRECTION)

Parameter	All - Day	Mon. - Fri.	Sat.	Sun.
<b>EAST BOUND</b>				
A.A.D.T.	158880	166580	166960	125100
R 12 / 24 - %	74.7	76	73.2	68.3
R 16 / 24 - %	89.1	89.7	88.2	85.9
AM Peak Hour	0800-0900	0800-0900	0900-1000	0900-1000
One-way flow at AM peak hour	12500	14660	11630	6150
T - % (AM)	-	22	-	-
PM Peak Hour	1700-1800	1700-1800	1700-1800	1700-1800
One-way flow at PM peak hour	10000	10550	10080	7930
T - % (PM)	-	18.9	-	-
Prop.of commercial vehicles - 16 hr.	-	21.9	-	-
<b>WEST BOUND</b>				
A.A.D.T.	158280	165470	165590	127840
R 12 / 24 - %	68.4	69.4	68	62.7
R 16 / 24 - %	88	88.9	86.6	84.1
AM Peak Hour	0800-0900	0800-0900	0900-1000	0900-1000
One-way flow at AM peak hour	8230	9310	8100	4870
T - % (AM)	-	24.2	-	-
PM Peak Hour	1800-1900	1800-1900	1700-1800	1800-1900
One-way flow at PM peak hour	12280	13230	11920	8870
T - % (PM)	-	14.4	-	-
Prop.of commercial vehicles - 16 hr.	-	21.9	-	-

3. OTHER INFORMATION AND COMMENT

4. Vehicle classification and occupancy - Monday to Friday

Time		Class of vehicle									
		Motor Cycle	Private Car	Taxi	Private LB	PLB	Goods veh.		Non Fr. Bus	Fr. Bus	
							Light	M & H		SD	DD
0700-0800	Pro	4.3	46.7	7.0	0.6	2.3	17.9	13.7	2.9	0.1	4.5
	Ocp	1.1	1.3	2.0	8.2	13.1	1.4	1.1	21.3	18.9	62.2
0800-0900 Peak Hour	Pro	2.6	48.8	5.8	0.7	1.5	17.6	16.8	2.1	0.1	3.9
	Ocp	1.1	1.3	2.0	4.7	13.8	1.4	1.2	22.6	19.0	60.0
0900-1000	Pro	1.8	43.8	7.0	0.4	1.6	22.5	18.2	1.1	0.1	3.6
	Ocp	1.1	1.3	1.8	1.7	10.3	1.4	1.2	8.3	8.8	33.3
1000-1100	Pro	1.5	36.3	6.8	0.5	1.9	25.2	23.5	0.8	0.1	3.6
	Ocp	1.0	1.3	1.9	2.3	8.6	1.3	1.2	9.9	11.9	29.2
1100-1200	Pro	1.4	35.8	6.3	0.6	1.6	25.5	24.4	1.0	0.1	3.3
	Ocp	1.1	1.3	2.0	2.8	9.9	1.4	1.2	6.4	12.1	29.8
1200-1300	Pro	1.1	43.1	5.8	0.9	1.6	21.7	21.4	1.0	0.1	3.3
	Ocp	1.1	1.3	1.9	5.1	12.0	1.3	1.2	10.1	11.2	31.1
1300-1400	Pro	1.4	41.2	6.6	0.7	1.4	23.8	20.4	1.1	0.1	3.3
	Ocp	1.1	1.3	2.0	7.0	12.3	1.4	1.2	13.9	13.7	34.5
1400-1500	Pro	1.4	38.4	5.8	0.7	1.5	24.4	23.7	1.0	0.1	3.0
	Ocp	1.1	1.4	2.1	2.4	11.6	1.4	1.2	5.8	13.5	32.7
1500-1600	Pro	1.4	40.2	6.3	0.6	1.6	23.5	22.1	1.0	0.1	3.1
	Ocp	1.0	1.3	1.9	2.8	9.5	1.4	1.2	5.9	9.6	30.9
1600-1700	Pro	2.1	41.2	5.1	0.9	1.4	24.4	20.5	1.0	0.1	3.4
	Ocp	1.1	1.4	1.9	2.6	10.8	1.4	1.2	8.2	13.0	37.6
1700-1800	Pro	3.9	49.1	5.2	0.6	1.4	21.8	13.0	1.3	0.1	3.7
	Ocp	1.0	1.3	1.9	2.5	13.7	1.4	1.1	11.4	13.8	52.3
1800-1900	Pro	3.3	62.1	4.9	0.2	1.6	12.9	9.0	2.1	0.1	3.9
	Ocp	1.1	1.3	2.0	2.3	15.2	1.3	1.1	22.3	29.5	67.8
1900-2000	Pro	2.6	64.2	7.2	0.1	1.6	10.2	7.8	1.6	0.1	4.5
	Ocp	1.1	1.3	1.7	1.2	12.8	1.3	1.1	19.4	18.7	48.5
2000-2100	Pro	2.7	59.5	9.1	0.1	2.3	10.8	9.4	1.3	0.1	4.8
	Ocp	1.1	1.3	1.7	1.2	10.4	1.2	1.1	13.3	11.1	36.9
2100-2200	Pro	3.3	57.9	11.1	0.1	1.7	10.2	9.2	0.9	0.1	5.4
	Ocp	1.1	1.3	1.8	1.2	9.1	1.3	1.1	6.7	9.4	34.3
2200-2300	Pro	2.8	60.2	11.4	0.1	1.8	9.4	8.3	0.8	0.1	5.0
	Ocp	1.1	1.4	1.9	2.1	10.6	1.4	1.1	10.8	7.5	34.9
16 hours	Pro	2.4	47.5	6.6	0.5	1.7	19.4	16.7	1.4	0.1	3.8
	Ocp	1.1	1.3	1.9	3.8	11.7	1.4	1.2	15.0	13.7	43.0

**Legend: Pro.** Proportion of vehicles in % (Sum may not add up to 100% due to figure rounding)\*

**Ocp.** Average occupancy of vehicles including both driver and passengers\*

**M&H** Medium and Heavy

\* All traffic data are collected from combined bounds